

Worm Gear Clamps

Combination 5/16" Hexagon and Screwdriver Slotted Screw. SAE 300 series stainless steel band and housing with SAE 305 stainless steel screw.



Note: This clamp meets with old Mil Spec WW-C-440B, which has been cancelled, and the new governing spec for hose clamps is SAE J1508. Maximum Recommended Torque 30in. lbs.

**Clamps sold 10 per box.*

STYLE HSS - WORM GEAR CLAMP

PART NO.	DIAM. RANGE (mm)		BAND WIDTH
	FROM	TO	
HSS6	11	20	1/2"
HSS8	13	23	1/2"
HSS10	14	27	1/2"
HSS12	17	32	1/2"
HSS16	21	38	1/2"
HSS20	21	44	1/2"
HSS24	27	51	1/2"
HSS28	33	57	1/2"
HSS32	40	64	1/2"
HSS36	46	70	1/2"
HSS40	52	76	1/2"
HSS44	59	83	1/2"
HSS48	65	89	1/2"
HSS52	71	95	1/2"
HSS56	78	102	1/2"
HSS60	84	108	1/2"
HSS64	90	114	1/2"
HSS72	104	127	1/2"
HSS80	117	140	1/2"
HSS88	130	152	1/2"
HSS96	142	165	1/2"
HSS104	155	180	1/2"
HSS128	143	216	9/16"
HSS152	181	254	9/16"
HSS188	238	311	9/16"
HSS200	257	330	9/16"
HSS212	276	349	9/16"
HSS224	295	368	9/16"
HSS236	314	387	9/16"
HSS248	333	406	9/16"
HSS312	435	508	9/16"

STYLE MH - MINIATURE WORM GEAR CLAMP*



**Boxed quantities only.*

PART NO.	DIAM. RANGE (mm)		BAND WIDTH
	FROM	TO	
MH4	5.6	16	5/16"
MH6	11	20	5/16"
MH8	12.7	23	5/16"
MH10	14	27	5/16"
MH12	17	32	5/16"
MH16	24	38	5/16"
MH20	30	44	5/16"

Miniature with combination 1/4" Hexagon and Screwdriver slotted screw. SAE 300 series stainless band and housing SAE 1018 case-hardened steel, zinc plated and chromate dip screw. Maximum Torque 10in/lbs.



**Boxed quantities only.*

STYLE MAH – MINIATURE WORM GEAR CLAMP*

PART NO.	DIAM. RANGE (mm)		BAND WIDTH
	FROM	TO	
MAH4	5.6	16	5/16"
MAH6	11	20	5/16"
MAH8	12.7	23	5/16"
MAH10	14	27	5/16"
MAH12	17	32	5/16"
MAH16	24	38	5/16"
MAH20	30	44	5/16"

Miniature all stainless construction with combination 1/4" Hexagon and Screwdriver slotted screw. SAE 300 series stainless band and housing SAE 305 stainless screw.
Maximum Torque 10in/lbs.



**Boxed quantities only.*

LS TYPE – QUICK RELEASE WORM GEAR CLAMP*

PART NO.	DIAM. RANGE (mm)	
	FROM	TO
LS48	38	89
LS56	25	102
LS72	51	127
LS88	52	152
LS96	90	166
LS104	44	178
LS128	44	217
LS152	51	254
LS188	52	312

301 Stainless Steel Housing and Band. Plated hardened carbon steel screw.



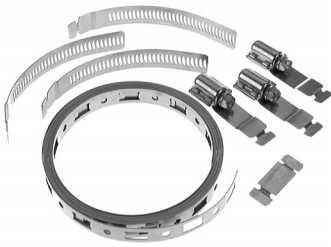
**Clamps sold 10 per box.*

LSS TYPE – QUICK RELEASE WORM GEAR CLAMP*

PART NO.	DIAM. RANGE (mm)	
	FROM	TO
LSS48	38	89
LSS72	51	127
LSS88	52	152
LSS104	44	178
LSS128	44	217
LSS188	52	312
LSS216	255	356
LSS248	254	406

301 Stainless Steel Housing and Band. With SAE 410 series stainless screw.

**All clamps sold 10 per box.*



WORM GEAR CLAMP - MAKE A CLAMP	
PART NO.	CONTENTS
4000	Retail card: 8 1/2" band 3 adj. fasteners, 1 band splice
4001	Kit with 100" band 25 adj. fasteners, 10 band splices
4002	Kit with 50" band 10 adj. fasteners, 5 band splices
4004	Adj. fastener. Priced per box Shipped 10 fasteners per box
4005	Box with 100" band, 10 band splices
4006	Box with 50" band, 5 band splices
4007	6" demonstrator disc with clamps
4008	Priced per box Shipped 10 band splices per box

This is a maintenance "clamp system" in a box. By simply cutting off a piece of a banding from a continuous roll, you can make any size 301 stainless steel worm-drive clamp from 2" diameter and up. It's a must for anyone likely to encounter requirements for varying sized large clamps. 1/2" band width. Reusable.