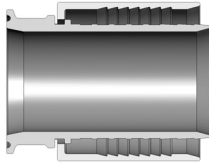


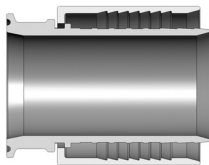
## Holedall® Hygienic Stem & Ferrule

For the food, brewing, chemical and pharmaceutical industry.



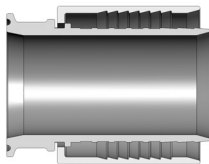
### BS 4825: PART 5: TYPE RJT

NOMINAL BORE/DN	EXTERNAL CRIMP STEM PART NO.		INTERNAL EXPANSION STEM PART NO.	
	MALE	FEMALE	MALE	FEMALE
1" / 25	HA0219	HA0224	-	HA0229
1 1/2" / 40	HA0220	HA0225	-	-
2" / 50	HA0221	HA0226	-	HA0231
2 1/2" / 65	HA0222	HA0227	-	HA0232
3" / 80	HA0223	HA0228	-	-
4" / 100	HA0293	HA0294	-	-



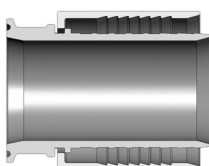
### DIN 11887 / DIN 11851

NOMINAL BORE/DN	EXTERNAL CRIMP STEM PART NO.		INTERNAL EXPANSION STEM PART NO.	
	MALE	FEMALE	MALE	FEMALE
1" / 25	HA0234	HA0239	HA0274	HA0244
1 1/2" / 40	HA0235	HA0240	HA0275	HA0245
2" / 50	HA0236	HA0241	HA0276	HA0246
2 1/2" / 65	HA0237	HA0242	HA0277	HA0247
3" / 80	HA0238	HA0243	HA0278	HA0248
4" / 100	HA0297	HA0298	HA0299	HA0300



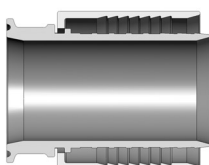
### BS 4825: PART 4: TYPE IDF

NOMINAL BORE/DN	EXTERNAL CRIMP STEM PART NO.		INTERNAL EXPANSION STEM PART NO.	
	MALE	FEMALE	MALE	FEMALE
1" / 25	HA0634	HA0628	-	-
1 1/2" / 40	HA0635	HA0629	-	-
2" / 50	HA0636	HA0630	-	-
2 1/2" / 65	HA0637	HA0631	-	HA0650
3" / 80	HA0638	HA0632	-	-
4" / 100	HA0639	HA0633	-	HA0652



### SMS

NOMINAL BORE/DN	EXTERNAL CRIMP STEM PART NO.		INTERNAL EXPANSION STEM PART NO.	
	MALE	FEMALE	MALE	FEMALE
1" / 25	HA0622	HA0616	-	-
1 1/2" / 40	HA0623	HA0617	-	HA0608
2" / 50	HA0624	HA0618	-	HA0609
2 1/2" / 65	HA0625	HA0619	-	HA0610
3" / 80	HA0626	HA0620	-	HA0611
4" / 80	HA0627	HA0621	-	HA0612



### BS 4825: PART 3: CLAMP TYPE

NOMINAL BORE/DN	EXTERNAL CRIMP STEM PART NO.	INTERNAL EXPANSION STEM PART NO.
	1" / 25	HA0640
1 1/2" / 40	HA0641	HA0666
2" / 50	HA0642	HA0667
2 1/2" / 65	HA0643	HA0668
3" / 80	HA0644	HA0669
4" / 80	HA0645	HA0670



## EXTERNAL CRIMP AND INTERNAL EXPANSION FERRULES

NOMINAL BORE/DN	PART NO.		HOSE RANGE	
	EXTERNAL	INTERNAL	FROM	TO
1" / 25	HA0249-43-3	HA0259-43-3	35.7	36.5
1" / 25	HA0249-45-3	HA0259-43-3	36.9	37.7
1" / 25	HA0249-46-3	HA0259-43-3	38.1	38.9
1" / 25	HA0249-47-3	HA0259-43-3	39.3	40.1
1" / 25	HA0249-48-3	HA0259-43-3	40.5	41.3
1 1/2" / 40	HA0250-56-3	HA0260-56-3	48.4	49.6
1 1/2" / 40	HA0250-58-3	HA0260-58-3	50.0	51.2
1 1/2" / 40	HA0250-59-3	HA0260-59-3	51.6	52.8
1 1/2" / 40	HA0250-61-3	HA0260-61-3	53.2	54.4
2" / 50	HA0251-70-3	HA0261-70-3	62.7	63.9
2" / 50	HA0251-72-3	HA0261-72-3	64.3	65.5
2" / 50	HA0251-74-3	HA0261-74-3	65.9	67.1
2" / 50	HA0251-75-3	HA0261-75-3	67.4	68.7
2 1/2" / 65	HA0252-84-3	HA0262-84-3	76.1	78.1
3" / 80	HA0253-98-3	HA0263-98-3	91.7	92.9
3" / 80	HA0253-100-3	HA0263-100-3	92.1	93.3
3" / 80	HA0253-101-3	HA0263-101-3	93.6	94.9
3" / 80	HA0253-103-3	HA0263-103-3	95.2	96.5
3" / 80	HA0253-105-3	HA0263-105-3	96.8	98.0
3" / 80	HA0253-106-3	HA0263-106-3	98.4	99.6
4" / 100	HA0301-129-5	HA0303-129-5	117.5	118.7
4" / 100	HA0301-130-5	HA0303-130-5	119.0	120.3
4" / 100	HA0301-132-5	HA0303-132-5	120.6	121.9
4" / 100	HA0301-133-5	HA0303-133-5	122.2	123.5
4" / 100	HA0301-135-5	HA0303-135-5	123.8	125.0

Holedall Hygienic Couplings are manufactured from Austenitic Stainless Steel Grade 316 S11 (1.4404) (Stems) and grade 304 S15 (1.4301) (Ferrules). Female stems can be supplied complete with the relevant nut. When ordering Ferrules, please state hose dimensions.

External Crimp Ferrules can be used with any type of External Crimp Stem of the same size.

Internal Expansion Ferrules can be used with any type of Internal Expansion Stem of the same size.



Please note: These fittings are available to suit RJT, IDF, SMS, DIN. Please advise your requirement.

## HOLEDALL INTERNAL EXPANSION (IX) ENGINEERING POLYMER FERRULES

PART NO.	SIZE	HOSE OD RANGE (mm)	
		TO	FROM
HA0259-43-3BLU	1"	35.7	36.5
HA0259-45-3BLU	1"	36.9	37.7
HA0259-46-3BLU	1"	38.1	38.9
HA0259-47-3BLU	1"	39.3	40.1
HA0259-48-3BLU	1"	40.5	41.3
HA0260-58-4BLU	1 1/2"	48.4	49.6
HA0260-60-4BLU	1 1/2"	50	51.2
HA0260-61-4BLU	1 1/2"	51.6	52.8
HA0260-63-4BLU	1 1/2"	53.2	54.4
HA0261-72-4BLU	2"	62.7	63.9
HA0261-74-4BLU	2"	64.3	65.5
HA0261-76-4BLU	2"	65.9	67.1
HA0261-78-4BLU	2"	67.4	68.7
HA0262-86-4BLU	2 1/2"	76.1	78.1
HA0263-100-4BLU	3"	91.7	92.9
HA0263-102-4BLU	3"	92.1	93.3
HA0263-103-4BLU	3"	93.6	94.9
HA0263-105-4BLU	3"	95.2	96.5
HA0263-107-3BLU	3"	96.8	98
HA0263-108-3BLU	3"	98.4	99.6
HA0303-129-5BLU	4"	117.5	118.7
HA0303-130-5BLU	4"	119	120.3
HA0303-132-5BLU	4"	120.6	121.9
HA0303-133-5BLU	4"	122.2	123.5
HA0303-135-3BLU	4"	123.8	125

Holedall Engineering Polymer Ferrules are also available in sizes 1" thru 3" for Industrial Hose applications, with a maximum working pressure of 20 Bar/300 psi

Note: For other Holedall fittings please refer to section H.