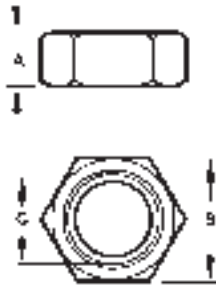


B



RJT HEX NUT RJT-13H

PART NO.	SIZE	A (mm)	B (mm)	C (mm)
13H-G100RJT	1"	22.20	50.8	42.6* 8T
13H-G150RJT	1 1/2"	22.20	65.0	55.3* 6T
13H-G200RJT	2"	22.20	79.3	68.3* 6T
13H-G250RJT	2 1/2"	22.20	92.0	80.9* 6T
13H-G300RJT	3"	22.20	104.7	93.6* 6T
13H-G400RJT	4"	22.20	130.0	119.1* 6T



RJT BLANK CAP - 13RBN

PART NO.	SIZE
13RBN-G100RJT	1"
13RBN-G150RJT	1 1/2"
13RBN-G200RJT	2"
13RBN-G250RJT	2 1/2"
13RBN-G300RJT	3"
13RBN-G400RJT	4"

Please Note: Blanks can only be used with a matching nut



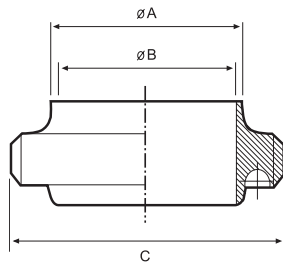
RJT HEX BLANK NUT WITH CHAIN -13HBN

PART NO.	SIZE
13HBN-G100RJT	1"
13HBN-G150RJT	1 1/2"
13HBN-G200RJT	2"
13HBN-G250RJT	2 1/2"
13HBN-G300RJT	3"
13HBN-G400RJT	4"



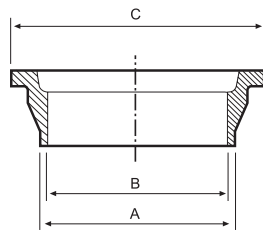
RJT SPANNER

PART NO.	SIZE
RJT-1SP	1"
RJT-1.5SP	1 1/2"
RJT-2SP	2"
RJT-2.5SP	2 1/2"
RJT-3SP	3"
RJT-4SP	4"



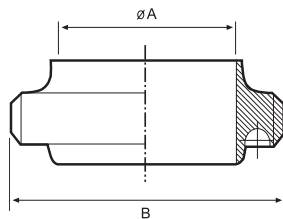
RJT WELDING MALE RJT-15

PART NO.	SIZE	A (mm)	B (mm)	C (mm)
15A-R100RJT	1"	25.65	22.20	45.72
15A-R150RJT	1 1/2"	38.35	34.90	58.42
15A-R200RJT	2"	51.05	47.60	78.72
15A-R250RJT	2 1/2"	63.75	60.30	85.42
15A-R300RJT	3"	76.45	73.00	98.12
15A-R400RJT	4"	101.85	97.60	123.52



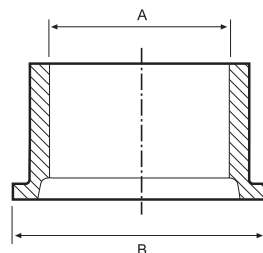
RJT WELDING LINER RJT-14

PART NO.	SIZE	A (mm)	B (mm)	C (mm)
14A-R100RJT	1"	25.65	22.20	41.30
14A-R150RJT	1 1/2"	38.35	34.90	54.00
14A-R200RJT	2"	51.05	47.60	66.70
14A-R250RJT	2 1/2"	63.75	60.30	79.40
14A-R300RJT	3"	76.45	73.00	92.10
14A-R400RJT	4"	101.85	97.60	117.50



RJT EXPANDING MALE 15R

PART NO.	SIZE	A (mm)	B (mm)
15R-R100RJT	1"	22.20	45.72 * 8TPI
15R-R150RJT	1 1/2"	34.90	58.42 * 8TPI
15R-R200RJT	2"	47.60	78.72 * 6TPI
15A-R250RJT	2 1/2"	60.30	85.42 * 6TPI
15R-R250RJT	3"	73.00	98.12 * 6TPI
15R-R400RJT	4"	97.60	123.52 * 6TPI



RJT EXPANDING LINER 14R

PART NO.	SIZE	A (mm)	B (mm)
14R-R100RJT	1"	22.20	41.30
14R-R150RJT	1 1/2"	34.90	54.00
14R-R200RJT	2"	47.60	66.70
14R-R250RJT	2 1/2"	60.30	79.40
14R-R300RJT	3"	73.00	92.10
14R-R400RJT	4"	97.60	117.50

B



HOLEDALL® RJT EXTERNAL CRIMP STEM

PART NO.	SIZE
FEMALE	
HA0224	1"
HA0225	1 1/2"
HA0226	2"
HA0227	2 1/2"
HA0228	3"
HA0294	4"
MALE	
HA0219	1"
HA0220	1 1/2"
HA0221	2"
HA0222	2 1/2"
HA0223	3"
HA0293	4"

Please Note: All stems are manufactured to suit inch bore hoses (not metric hose bores).

HOLEDALL® RJT EXTERNAL CRIMP FERRULES



PART NO.	SIZE	HOSE OD RANGE (mm)	
		From	To
HA0249-43-3	1"	35.7	36.5
HA0249-45-3	1"	36.9	37.7
HA0249-46-3	1"	38.1	38.9
HA0249-47-3	1"	39.3	40.1
HA0249-48-3	1"	40.5	41.3
HA0250-56-3	1 1/2"	48.4	49.6
HA0250-58-3	1 1/2"	50.0	51.2
HA0250-59-3	1 1/2"	51.6	52.8
HA0250-61-3	1 1/2"	53.2	54.4
HA0251-70-3	2"	62.7	63.9
HA0251-72-3	2"	64.3	65.5
HA0251-74-3	2"	65.9	67.1
HA0251-75-3	2"	67.4	68.7
HA0252-84-3	2 1/2"	76.1	78.1
HA0253-98-3	3"	91.7	92.9
HA0253-100-3	3"	92.1	93.3
HA0253-101-3	3"	93.6	94.9
HA0253-103-3	3"	95.2	96.5
HA0253-105-3	3"	96.8	98.0
HA0253-106-3	3"	98.4	99.6
HA0301-129-5	4"	117.5	118.7
HA0301-130-5	4"	119.0	120.3
HA0301-132-5	4"	120.6	121.9
HA0301-133-5	4"	122.2	123.5
HA0301-135-5	4"	123.8	125.0



HOLEDALL® RJT INTERNAL EXPANSION (IX) STEM

PART NO.	SIZE
FEMALE	
HA0229	1"
HA0231	2"
HA0232	2 1/2"

Please Note: All stems are manufactured to suit inch bore hoses (not metric hose bores).

B



HOLEDALL® RJT INTERNAL EXPANSION (IX) FERRULES

PART NO.	SIZE	HOSE OD RANGE (mm)	
		From	To
HA 0249-43-3	DN25	35.7	36.5
HA 0249-45-3	DN25	36.9	37.7
HA 0249-46-3	DN25	38.1	38.9
HA 0249-47-3	DN25	39.3	40.1
HA 0249-48-3	DN25	40.5	41.3
HA 0250-56-3	DN40	48.4	49.6
HA 0250-58-3	DN40	50.0	51.2
HA 0250-59-3	DN40	51.6	52.8
HA 0250-61-3	DN40	53.2	54.4
HA 0251-70-3	DN50	62.7	63.9
HA 0251-72-3	DN50	64.3	65.5
HA 0251-74-3	DN50	65.9	67.1
HA 0251-75-3	DN50	67.4	68.7
HA 0252-84-3	DN65	76.1	78.1
HA 0253-98-3	DN80	91.7	92.9
HA 0253-100-3	DN80	92.1	93.3
HA 0253-101-3	DN80	93.6	94.9
HA 0253-103-3	DN80	95.2	96.5
HA 0253-105-3	DN80	96.8	98.0
HA 0253-106-3	DN80	98.4	99.6
HA 0301-129-5	DN100	117.5	118.7
HA 0301-130-5	DN100	119.0	120.3
HA 0301-132-5	DN100	120.6	121.9
HA 0301-133-5	DN100	122.2	123.5
HA 0301-135-5	DN100	123.8	125.0

Please Note: For plastic IX ferrules see page 47.

B



RJT O-RING / SILICON			
PART NO.	SIZE	ID	OD
40MP-XW100RJT	1"	30	33.30
40MP-XW150RJT	1 1/2"	39.40	46.00
40MP-XW200RJT	2"	55.50	62.10
40MP-XW250RJT	2 1/2"	68.10	74.70
40MP-XW300RJT	3"	80.80	78.40
40MP-XW400RJT	4"	97.20	103.80



RJT O-RING / EPDM			
PART NO.	SIZE	ID	OD
40MP-E100RJT	1"	30	33.30
40MP-E150RJT	1 1/2"	39.40	46.00
40MP-E200RJT	2"	55.50	62.10
40MP-E250RJT	2 1/2"	68.10	74.70
40MP-E300RJT	3"	80.80	78.40
40MP-E400RJT	4"	97.20	103.80



RJT O-RING / VITON®			
PART NO.	SIZE	ID	OD
40MP-SFY100RJT	1"	30	33.30
40MP-SFY150RJT	1 1/2"	39.40	46.00
40MP-SFY200RJT	2"	55.50	62.10
40MP-SFY250RJT	2 1/2"	68.10	74.70
40MP-SFY300RJT	3"	80.80	78.40
40MP-SFY400RJT	4"	97.20	103.80



RJT O-RING / BUNA			
PART NO.	SIZE	ID	OD
40MP-U100RJT	1"	30	33.30
40MP-U150RJT	1 1/2"	39.40	46.00
40MP-U200RJT	2"	55.50	62.10
40MP-U250RJT	2 1/2"	68.10	74.70
40MP-U300RJT	3"	80.80	78.40
40MP-U400RJT	4"	97.20	103.80

PLEASE CALL FOR ALL YOUR OTHER RJT REQUIREMENTS. MANY OTHER PARTS AVAILABLE.