

DIN ROUND NUT 11851 4 SLOTS

PART NO.	SIZE	A (mm)	B (mm)	C (mm)
13R-G100DIN	DN25	63	52 x 1/6	21
13R-G150DIN	DN40	78	65 x 1/6	21
13R-G200DIN	DN50	92	78 x 1/6	22
13R-G250DIN	DN65	112	95 x 1/6	25
13R-G300DIN	DN80	127	110 x 1/4	30
13R-G400DIN	DN100	148	130 x 1/4	31

C



DIN BLANK

PART NO.	SIZE
16AMP-R100DIN	DN25
16AMP-R150DIN	DN40
16AMP-R200DIN	DN50
16AMP-R250DIN	DN65
16AMP-R300DIN	DN80
16AMP-R400DIN	DN100

Please Note: Blanks can only be used with a matching nut.



DIN BLANK NUT WITH CHAIN

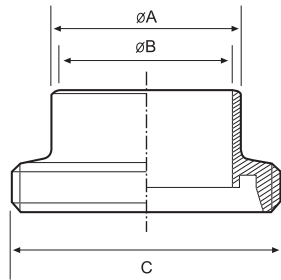
PART NO.	SIZE
13RBN-G100DIN	DN25
13RBN-G150DIN	DN40
13RBN-G200DIN	DN50
13RBN-G250DIN	DN65
13RBN-G300DIN	DN80
13RBN-G400DIN	DN100



DIN SPANNER

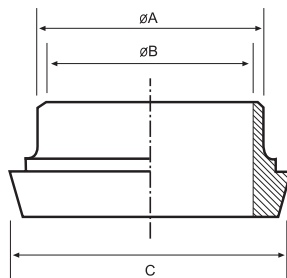
PART NO.	SIZE
DIN-1SP	DN25
DIN-1.5SP	DN40
DIN-2SP	DN50
DIN-2.5SP	DN65
DIN-3SP	DN80
DIN-4SP	DN100

C



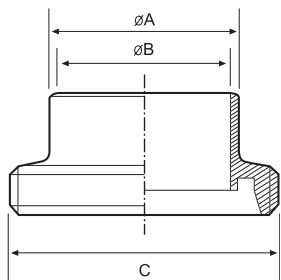
DIN WELD IMPERIAL

PART NO.	SIZE	A (mm)	B (mm)	C (mm)
15A-R100DIN	DN25	25.4	22.1	52 x 1/6
15A-R150DIN	DN40	38.1	34.8	65 x 1/6
15A-R200DIN	DN50	50.8	47.5	78 x 1/6
15A-R250DIN	DN65	63.5	60.2	95 x 1/6
15A-R300DIN	DN80	76.2	72.9	110 x 1/4
15A-R400DIN	DN100	101.6	97.6	130 x 1/4



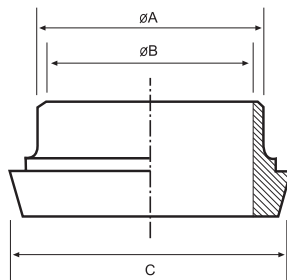
DIN WELD LINER IMPERIAL

PART NO.	SIZE	A (mm)	B (mm)	C (mm)
14A-R100DIN	DN25	25.4	22.1	44
14A-R150DIN	DN40	38.1	34.8	56
14A-R200DIN	DN50	50.8	47.5	68
14A-R250DIN	DN65	63.5	60.2	86
14A-R300DIN	DN80	76.2	72.9	100
14A-R400DIN	DN100	101.6	97.6	121



DIN WELD MALE METRIC

PART NO.	SIZE	A (mm)	B (mm)	C (mm)
15A-R100DINM	DN25	29	26	52 x 1/6
15A-R150DINM	DN40	41	38	65 x 1/6
15A-R200DINM	DN50	53	50	78 x 1/6
15A-R250DINM	DN65	70	66	95 x 1/6
15A-R300DINM	DN80	85	81	110 x 1/4
15A-R400DINM	DN100	104	100	130 x 1/4



DIN WELD LINER METRIC

PART NO.	SIZE	A (mm)	B (mm)	C (mm)
14A-R100DINM	DN25	29	26	44
14A-R150DINM	DN40	41	38	56
14A-R200DINM	DN50	53	50	68
14A-R250DINM	DN65	70	66	86
14A-R300DINM	DN80	85	81	100
14A-R400DINM	DN100	104	100	121



HOLEDALL® DIN EXTERNAL CRIMP STEM

PART NO.	SIZE
FEMALE	
HA 0239	DN25
HA 0240	DN40
HA 0241	DN50
HA 0242	DN65
HA 0243	DN80
HA 0298	DN100
MALE	
HA 0234	DN25
HA 0235	DN40
HA 0236	DN50
HA 0237	DN65
HA 0238	DN80
HA 0297	DN100

Please Note: All stems are manufactured to suit inch bore hoses (not metric hose bores).

C

HOLEDALL® DIN EXTERNAL CRIMP FERRULES

PART NO.	SIZE	HOSE OD RANGE (mm)	
		From	To
HA 0249-43-3	DN25	35.7	36.5
HA 0249-45-3	DN25	36.9	37.7
HA 0249-46-3	DN25	38.1	38.9
HA 0249-47-3	DN25	39.3	40.1
HA 0249-48-3	DN25	40.5	41.3
HA 0250-56-3	DN40	48.4	49.6
HA 0250-58-3	DN40	50.0	51.2
HA 0250-59-3	DN40	51.6	52.8
HA 0250-61-3	DN40	53.2	54.4
HA 0251-70-3	DN50	62.7	63.9
HA 0251-72-3	DN50	64.3	65.5
HA 0251-74-3	DN50	65.9	67.1
HA 0251-75-3	DN50	67.4	68.7
HA 0252-84-3	DN65	76.1	78.1
HA 0253-98-3	DN80	91.7	92.9
HA 0253-100-3	DN80	92.1	93.3
HA 0253-101-3	DN80	93.6	94.9
HA 0253-103-3	DN80	95.2	96.5
HA 0253-105-3	DN80	96.8	98.0
HA 0253-106-3	DN80	98.4	99.6
HA 0301-129-5	DN100	117.5	118.7
HA 0301-130-5	DN100	119.0	120.3
HA 0301-132-5	DN100	120.6	121.9
HA 0301-133-5	DN100	122.2	123.5
HA 0301-135-5	DN100	123.8	125.0



C



HOLEDALL® DIN INTERNAL EXPANSION (IX) STEM

PART NO.	SIZE
FEMALE	
HA0244	DN25
HA0245	DN40
HA0246	DN50
HA0247	DN65
HA0248	DN80
HA0300	DN100
MALE	
HA0274	DN25
HA0275	DN40
HA0276	DN50
HA0277	DN65
HA0278	DN80
HA0279	DN100

Please Note: All stems are manufactured to suit inch bore hoses (not metric hose bores).

HOLEDALL® DIN INTERNAL EXPANSION (IX) FERRULES

PART NO.	SIZE	HOSE OD RANGE (mm)	
		From	To
HA0259-43-3	DN25	35.7	36.5
HA0259-45-3	DN25	36.9	37.7
HA0259-46-3	DN25	38.1	38.9
HA0259-47-3	DN25	39.3	40.1
HA0259-48-3	DN25	40.5	41.3
HA0260-56-3	DN40	48.4	49.6
HA0260-58-3	DN40	50.0	51.2
HA0260-59-3	DN40	51.6	52.8
HA0260-61-3	DN40	53.2	54.4
HA0261-70-3	DN50	62.7	63.9
HA0261-72-3	DN50	64.3	65.5
HA0261-74-3	DN50	65.9	67.1
HA0261-75-3	DN50	67.4	68.7
HA0262-84-3	DN65	76.1	78.1
HA0263-98-3	DN80	91.7	92.9
HA0263-100-3	DN80	92.1	93.3
HA0263-101-3	DN80	93.6	94.9
HA0263-103-3	DN80	95.2	96.5
HA0263-105-3	DN80	96.8	98.0
HA0263-106-3	DN80	98.4	99.6
HA0303-129-5	DN100	117.5	118.7
HA0303-130-5	DN100	119.0	120.3
HA0303-132-5	DN100	120.6	121.9
HA0303-133-5	DN100	122.2	123.5
HA0303-135-5	DN100	123.8	125.0

Please Note: For plastic IX ferrules see page 47.





GASKET FOR DIN / SILICON			
PART NO.	SIZE	ID	OD
40MP-S20MDIN	DN20	23	33
40MP-S25MDIN	DN25	30	40
40MP-S32MDIN	DN32	36	46
40MP-S40MDIN	DN40	42	52
40MP-S50MDIN	DN50	54	64
40MP-S65MDIN	DN65	71	81
40MP-S80MDIN	DN80	85	95
40MP-S100MDIN	DN100	104	114



GASKET FOR DIN / EPDM			
PART NO.	SIZE	ID	OD
40MP-E20MDIN	DN20	23	33
40MP-E25MDIN	DN25	30	40
40MP-E32MDIN	DN32	36	46
40MP-E40MDIN	DN40	42	52
40MP-E50MDIN	DN50	54	64
40MP-E65MDIN	DN65	71	81
40MP-E80MDIN	DN80	85	95
40MP-E100MDIN	DN100	104	114



GASKET FOR DIN / VITON®			
PART NO.	SIZE	ID	OD
40MP-V20MDIN	DN20	23	33
40MP-V25MDIN	DN25	30	40
40MP-V32MDIN	DN32	36	46
40MP-V40MDIN	DN40	42	52
40MP-V50MDIN	DN50	54	64
40MP-V65MDIN	DN65	71	81
40MP-V80MDIN	DN80	85	95
40MP-V100MDIN	DN100	104	114



GASKET FOR DIN / BUNA			
PART NO.	SIZE	ID	OD
40MP-U20MDIN	DN20	23	33
40MP-U25MDIN	DN25	30	40
40MP-U32MDIN	DN32	36	46
40MP-U40MDIN	DN40	42	52
40MP-U50MDIN	DN50	54	64
40MP-U65MDIN	DN65	71	81
40MP-U80MDIN	DN80	85	95
40MP-U100MDIN	DN100	104	114

PLEASE CALL FOR ALL YOUR OTHER DIN REQUIREMENTS. MANY OTHER PARTS AVAILABLE.