

IDF HEX NUT

PART NO.	SIZE	A (mm)	B (mm)	C (mm)
13H-G100IDF	1"	30	46	34.34 X 8T ACME
13H-G150IDF	1 1/2"	30	60	47.86 X 8T ACME
13H-G200IDF	2"	30	75	61.37 X 8T ACME
13H-G250IDF	2 1/2"	30	90	74.88 X 8T ACME
13H-G300IDF	3"	30	105	88.40 X 8T ACME
13H-G400IDF	4"	34.9	133	122.05 X 6T ACME

C



IDF BLANK CAP

PART NO.	SIZE
16AMP-R100IDF	1"
16AMP-R150IDF	1 1/2"
16AMP-R200IDF	2"
16AMP-R250IDF	2 1/2"
16AMP-R300IDF	3"
16AMP-R400IDF	4"

Please Note: Blanks can only be used with a matching nut.



IDF BLANK NUT WITH CHAIN

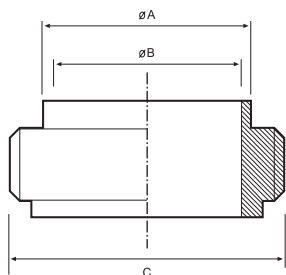
PART NO.	SIZE
13HBN-G100IDF	1"
13HBN-G150IDF	1 1/2"
13HBN-G200IDF	2"
13HBN-G250IDF	2 1/2"
13HBN-G300IDF	3"
13HBN-G400IDF	4"



IDF SPANNER

PART NO.	SIZE
IDF-1SP	1"
IDF-2SP	1 1/2"
IDF-2SP	2"
IDF2.5SP	2 1/2"
IDF-3SP	3"
IDF-4SP	4"

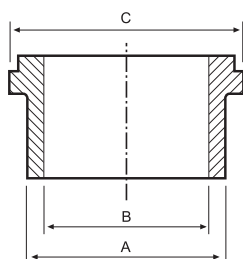
IDF BS:4825 Part 4 Couplings and Gaskets



IDF WELD MALE

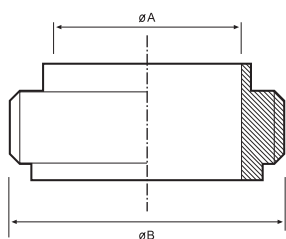
PART NO.	SIZE	A (mm)	B (mm)	C (mm)
15A-R100IDF	1"	25.4	22.1	37.13 x 8T
15A-R150IDF	1 1/2"	38.1	34.8	50.65 x 8T
15A-R200IDF	2"	50.8	47.5	64.16 x 8T
15A-R250IDF	2 1/2"	63.5	60.2	77.67 x 8T
15A-R300IDF	3"	76.2	72.9	91.19 x 8T
15A-R400IDF	4"	101.6	97.6	125.9 x 6T

D



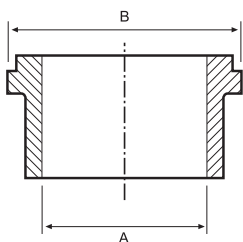
IDF WELD LINER

PART NO.	SIZE	A (mm)	B (mm)	C (mm)
14A-R100IDF	1"	25.4	22.1	33.80
14A-R150IDF	1 1/2"	38.1	34.8	47.00
14A-R200IDF	2"	50.8	47.5	60.50
14A-R250IDF	2 1/2"	63.5	60.2	74.00
14A-R300IDF	3"	76.2	72.9	87.50
14A-R400IDF	4"	101.6	97.6	120.60



IDF EXPANDING MALE

PART NO.	SIZE	A (mm)	B (mm)
15R-R100IDF	1"	22.20	37.13 x 8T
15R-R150IDF	1 1/2"	34.90	50.65 x 8T
15R-R200IDF	2"	47.60	64.16 x 8T
15R-R250IDF	2 1/2"	60.30	77.67 x 8T
15R-R300IDF	3"	73.00	91.19 x 8T
15R-R350IDF	4"	97.60	125.9 x 6T



IDF EXPANDING LINER

PART NO.	SIZE	A (mm)	B (mm)
14R-R100IDF	1"	22.30	33.80
14R-R150IDF	1 1/2"	34.90	47.00
14R-R200IDF	2"	47.60	60.50
14R-R250IDF	2 1/2"	60.30	74.00
14R-R300IDF	3"	73.00	87.50
14R-R400IDF	4"	97.60	120.60

D



HOLEDALL® IDF EXTERNAL CRIMP STEM

PART NO.	SIZE
FEMALE	
HA0628	1"
HA0629	1 1/2"
HA0630	2"
HA0631	2 1/2"
HA0632	3"
HA0633	4"
MALE	
HA0634	1"
HA0635	1 1/2"
HA0636	2"
HA0637	2 1/2"
HA0638	3"
HA0639	4"

Please Note: All stems are manufactured to suit inch bore hoses (not metric hose bores).

HOLEDALL® IDF EXTERNAL CRIMP FERRULES

PART NO.	SIZE	HOSE OD RANGE (mm)	
		From	To
HA0249-43-3	1"	35.7	36.5
HA0249-45-3	1"	36.9	37.7
HA0249-46-3	1"	38.1	38.9
HA0249-47-3	1"	39.3	40.1
HA0249-48-3	1"	40.5	41.3
HA0250-56-3	1 1/2"	48.4	49.6
HA0250-58-3	1 1/2"	50.0	51.2
HA0250-59-3	1 1/2"	51.6	52.8
HA0250-61-3	1 1/2"	53.2	54.4
HA0251-70-3	2"	62.7	63.9
HA0251-72-3	2"	64.3	65.5
HA0251-74-3	2"	65.9	67.1
HA0251-75-3	2"	67.4	68.7
HA0252-84-3	2 1/2"	76.1	78.1
HA0253-98-3	3"	91.7	92.9
HA0253-100-3	3"	92.1	93.3
HA0253-101-3	3"	93.6	94.9
HA0253-103-3	3"	95.2	96.5
HA0253-105-3	3"	96.8	98.0
HA0253-106-3	3"	98.4	99.6
HA0301-129-5	4"	117.5	118.7
HA0301-130-5	4"	119.0	120.3
HA0301-132-5	4"	120.6	121.9
HA0301-133-5	4"	122.2	123.5
HA0301-135-5	4"	123.8	125.0





HOLEDALL® IDF INTERNAL EXPANSION (IX) STEM

PART NO.	SIZE
FEMALE HA0650 HA0652	2 1/2" 4"

Please Note: All stems are manufactured to suit inch bore hoses (not metric hose bores).

D

HOLEDALL® IDF INTERNAL EXPANSION (IX) FERRULES

PART NO.	SIZE	HOSE OD RANGE (mm)	
		From	To
HA0259-43-3	1"	35.7	36.5
HA0259-45-3	1"	36.9	37.7
HA0259-46-3	1"	38.1	38.9
HA0259-47-3	1"	39.3	40.1
HA0259-48-3	1"	40.5	41.3
HA0260-56-3	1 1/2"	48.4	49.6
HA0260-58-3	1 1/2"	50.0	51.2
HA0260-59-3	1 1/2"	51.6	52.8
HA0260-61-3	1 1/2"	53.2	54.4
HA0261-70-3	2"	62.7	63.9
HA0261-72-3	2"	64.3	65.5
HA0261-74-3	2"	65.9	67.1
HA0261-75-3	2"	67.4	68.7
HA0262-84-3	2 1/2"	76.1	78.1
HA0263-98-3	3"	91.7	92.9
HA0263-100-3	3"	92.1	93.3
HA0263-101-3	3"	93.6	94.9
HA0263-103-3	3"	95.2	96.5
HA0263-105-3	3"	96.8	98.0
HA0263-106-3	3"	98.4	99.6
HA0303-129-5	4"	117.5	118.7
HA0303-130-5	4"	119.0	120.3
HA0303-132-5	4"	120.6	121.9
HA0303-133-5	4"	122.2	123.5
HA0303-135-5	4"	123.8	125.0

Please Note: For plastic IX ferrules see page 47.





SEAL TYPE IDF O-RING EPDM

PART NO.	SIZE	ID	OD
40MP-E100IDF	1"	23.20	32.50
40MP-E150IDF	1 1/2"	35.90	46.00
40MP-E200IDF	2"	48.60	59.50
40MP-E250IDF	2 1/2"	61.30	73.20
40MP-E300IDF	3"	74.00	86.50
40MP-E400IDF	4"	98.60	119.00

D



SEAL TYPE IDF O-RING VITON®

PART NO.	SIZE	ID	OD
40MP-SFY100IDF	1"	23.20	32.50
40MP-SFY150IDF	1 1/2"	35.90	46.00
40MP-SFY200IDF	2"	48.60	59.50
40MP-SFY250IDF	2 1/2"	61.30	73.20
40MP-SFY300IDF	3"	74.00	86.50
40MP-SFY400IDF	4"	98.60	119.00



SEAL TYPE IDF O-RING BUNA (NITRILE)

PART NO.	SIZE	ID	OD
40MP-U100IDF	1"	23.20	32.50
40MP-U150IDF	1 1/2"	35.90	46.00
40MP-U200IDF	2"	48.60	59.50
40MP-U250IDF	2 1/2"	61.30	73.20
40MP-U300IDF	3"	74.00	86.50
40MP-U400IDF	4"	98.60	119.00



GASKET FOR IDF / SILICON

PART NO.	SIZE	ID	OD
40MP-X100IDF	1"	23.20	32.50
40MP-X150IDF	1 1/2"	35.90	46.00
40MP-X200IDF	2"	48.60	59.50
40MP-X250IDF	2 1/2"	61.30	73.20
40MP-X300IDF	3"	74.00	86.50
40MP-X400IDF	4"	98.60	119.00

PLEASE CALL FOR ALL YOUR OTHER IDF REQUIREMENTS. MANY OTHER PARTS AVAILABLE.